

Fabienne  
Picaud  
**Sculpteur  
verrier**











**1. Reine des Poissons Armchair**, 2017,  
120 x 80 x 60 cm, blown  
glass, stainless steel,  
photo by I. Tabelion

**2. La Compagnie  
des Zozos**, 2019,  
25 x 38 x 70 cm, blown  
glass, shaped flat glass,  
photo by P. Petrolese

**3. Contraintes au  
Carré**, 2016,  
58 x 58 x 15 cm, blown  
glass, cut glass, copper  
plated patinated steel,  
photo by R. Spicer









5.

**4. Emulsion, 2017,**  
48 x 48 cm, blown  
glass, glass beads,  
brass base, interior  
lighting, photo by R.  
Spicer

**5. Nuée Arc-En-Ciel,**  
2011, 55 x 36 x 15 cm,  
blown glass, glass  
beads, stainless steel,  
photo by R. Spicer







*"Art works tell stories. In Fabienne Picaud's work it is often personality traits and human behavior which inspire the connections between bubbles of blown glass. They evoke timidity, co-existence within a group, human and social relations or little stories."*

**Eric Louet, Director of Musées de Conches, France.**

**6. Jardin des Délices, L'Indomptable.** 2016, 51 x 24 x 21 cm, cast glass, drawn cut glass, removable pieces, photo by Galerie Caron Bedout

**7. Arbres Timides Vivants,** 2010, 48 x 35 x 8 cm, blown silvered glass, cast glass, nickel plated polished steel, removable pieces, photo by R. Spicer



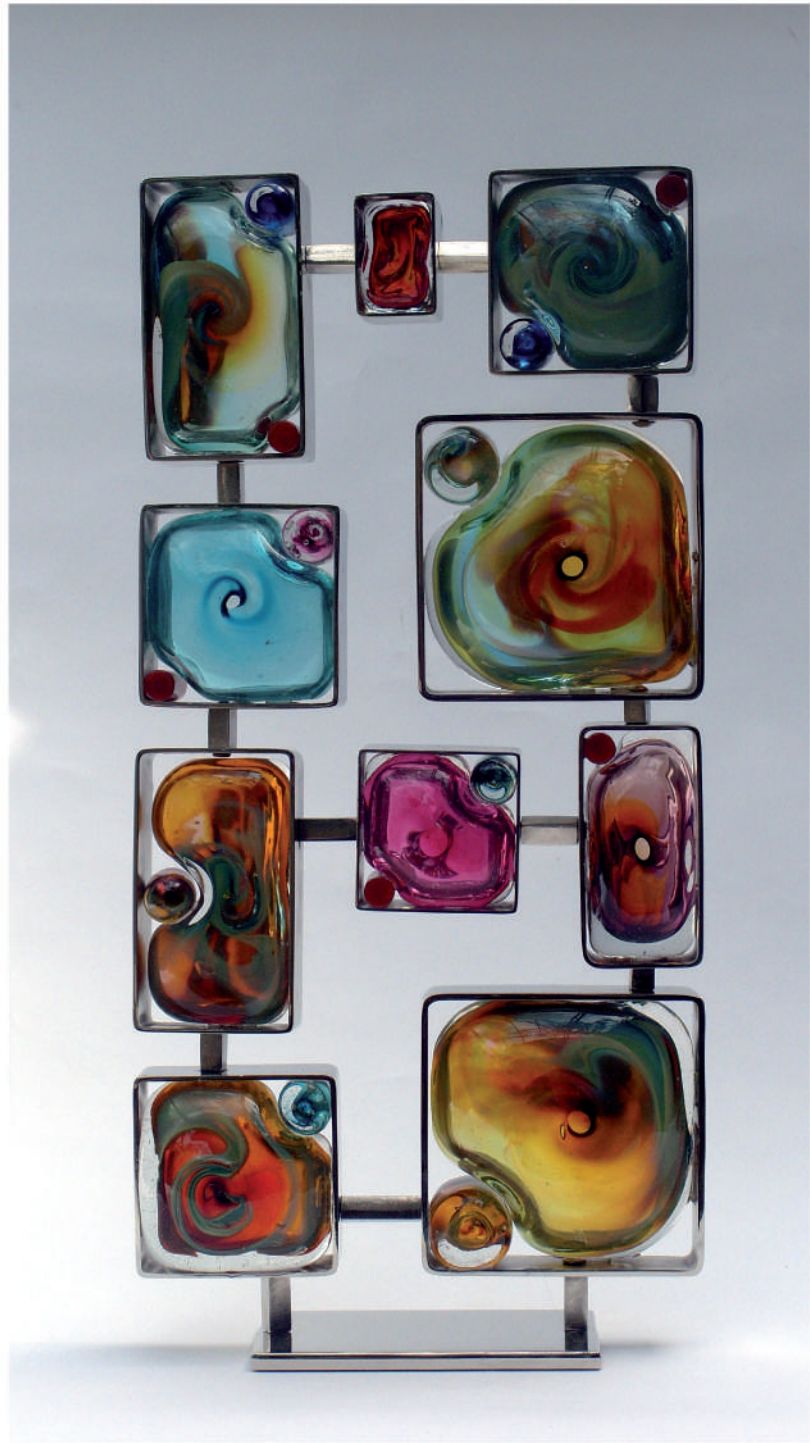
8



8.



9.



10.



11.



**8. Petit théâtre,** 2010,  
38 x 10 cm, blown glass,  
cast glass, nickel plated  
polished steel, remova-  
ble pieces, photo by R.  
Spicer

**9. Les points sur les i,**  
2011, 42 x 61 x 4 cm,  
framework glass, cast  
glass, copper plated  
steel, photo by R. Spicer

**10. Panneau Clamecy,**  
2011, 60 x 29 x 10 cm,  
blown glass, cut glass,  
nickel plated steel photo  
by R. Spicer

**11. Face aux vents,**  
2011, 40 x 50 x 5 cm,  
framework glass, cast  
glass, photo by R. Spicer





**12. Le Charme du  
Crapaud Armchair,**  
2018, 60 x 60 x 70 cm,  
blown glass, stainless  
steel, photo by I. Tabelion  
and Atelier Beyong

**13. Veiller aux Grains,**  
2009, 48 x 38 x 12 cm,  
blown glass, glass beads,  
white epoxy enameled  
steel

**14. Fil Conducteur,**  
2007, 150 x 35 x 6 cm,  
blown glass, nickel plated  
steel, photo D. Fona



13.



14.

**Fabienne Picaud first trained**

Glass in Stourbridge, England in the 80's before pursuing further study in France. She set up her personal workshop in 1991 in Paris. Her work was chosen for the presents offered by the president to Heads of State invited to the Francophone Summit of 1992-1993. She received the 1995 and 2006 Prize for Paris from the National Institute for Métiers d'Art (INMA, ex-SEMA) and the 1st Prize at the Rencontres Internationales des Objets d'Art, in St Etienne in 2007. Various of her pieces are published in the renowned Corning Glass Review. Fabienne Picaud is affiliated to the Ateliers d'Art de France.

Fabienne is frequently invited to exhibit in France and abroad: in 2015 she was selected to be part of the french delegation to exhibit at LIULI Museum in Shanghai. She participated in the Seul Craft Week (2018) and Korean International Art Fair, (2013) in South Korea. She also participated in several editions of SOFA Chicago and New York (Sculpture Objects, Functional Art and design), exhibited at the Mostly Glass Gallery (USA), Vitromusée Romont (Switzerland), Glasrijk Tubbergen (Holland), Galerie Caron Bedout (France), Sars Poterie (France) and at the Museum of the Romantics in Paris.







16.

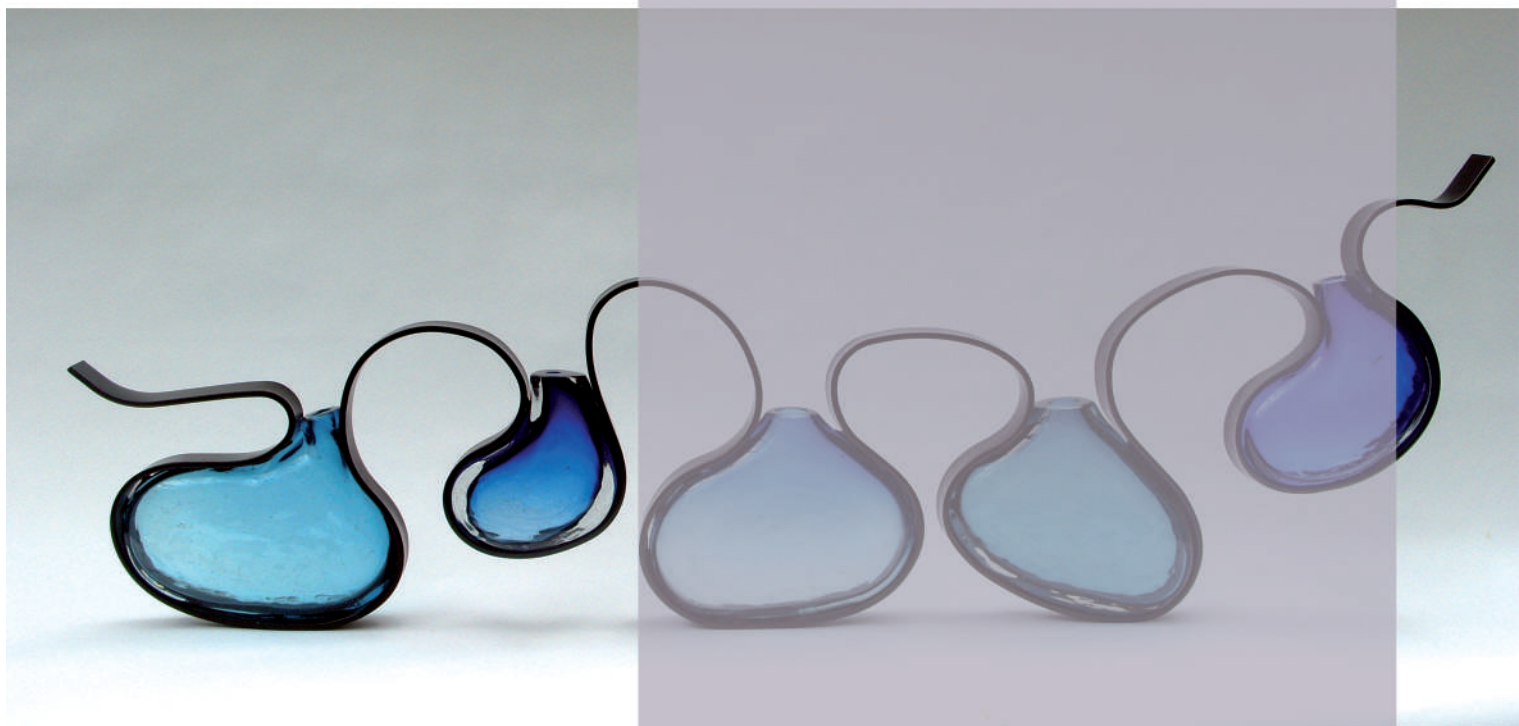


17.

**15. Culbuto**, 2014,  
15 x 12 x 15 cm, blown  
glass, polished nickel  
plated steel or patinated  
varnished steel accor-  
ding to model, photo by  
R. Spicer

**16. Goutte de S.**, 2018,  
40 x 40 x 4 cm, blown  
glass, cast glass, patina-  
ted steel, photo by P.  
Petrolese

**17. Empreinte violette**,  
60 x 40 x 7 cm, blown  
glass, nickel plated steel,  
photo by D. Fona



**contact:**

---

Cellphone **+33 6 34 26 18 09**

[picaud.fabienne@neuf.fr](mailto:picaud.fabienne@neuf.fr)

[www.fabiennepicaud.com](http://www.fabiennepicaud.com)

Instagram: [@fabiennepicaud](https://www.instagram.com/fabiennepicaud)

**Showroom**

67, rue de Reuilly  
75012 Paris

**Atelier**

8, rue Émile Reboulleau  
58500 Clamecy

Tel. **+33 3 58 05 13 08**